



Baghouse Dust Collector Parts and Services



Your one stop shop for all your baghouse dust collection needs

RHAJTEK not just make the equipment- we provide products/services that make the equipment operate **better**

Products for Baghouses

- New Baghouse units
- Filter bags (various media options)
- Support cages
- Pleated filter elements
- ePTFE membrane filters
- Emissions monitors
- Clamps, gauges, valves
- Leak detection powder
- Tubesheets, venturis, gaskets
- Access doors, door seal
- Diaphragm valves
- Rotary valves
- Screw conveyors



Customer-Focused Services

For all your air pollution control equipment needs

- Troubleshooting Expertise
- Responsive Sales
- Mechanical Replacement Parts
- Inspection services
- Installation services
- Engineering / CAD
- Upgrades and Rebuilds
- Maintenance Seminars
- Technical audit/evaluation of existing air pollution control equipment
- New installation
- Preventive Maintenance Services



We provide replacement parts for all types of Baghouse Dust Collection Units

Baghouse Dust Collection System

Many Industries today faces the problem that their exhaust gas contains too many particulate matter. Industries can choose among several different types of particulate control devices to reduce emissions including baghouse, electrostatic precipitator and scrubbers.

Baghouse dust collection system take advantage of the fact that particulate are larger than gas molecules. Therefore, when dirty gas/air is filtered through a baghouse, the particulate are captured on the filters while the clean gas escapes. Particulate, while larger than gas molecules, come in many different sizes, shapes and textures. Baghouse dust collection system are designed to accommodate the unique properties of the exhaust gas and particulate being collected.

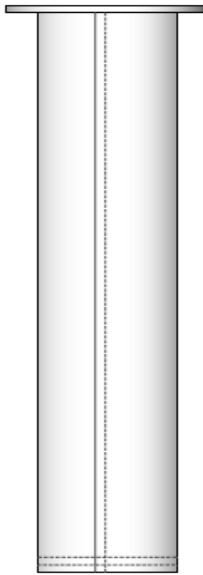
Filter bags can be constructed in different ways and the filter bag material is selected based on its appropriateness for the given process. Please see table below for the fabric selection which serves as a guideline in deciding which materials is right for you.

	Polypropylene	Polyester	Acrylic	Fiberglass	Aramid (Nomex)	PPS (Ryton)
Max. continuous Operating Temperature	80°C	130°C	129°C	260°C	204°C	190°C
Abrasion	Excellent	Excellent	Good	Fair	Excellent	Good
Energy Absorption	Good	Excellent	Good	Fair	Good	Good
Filtration Properties	Good	Excellent	Good	Fair	Excellent	Excellent
Moist Heat	Excellent	Poor	Excellent	Excellent	Fair	Good
Alkalines	Excellent	Good	Fair	Fair	Good	Excellent
Mineral Acids	Excellent	Fair	Good	Poor	Fair	Excellent
Oxygen (15%+)	Excellent	Excellent	Excellent	Excellent	Excellent	Poor

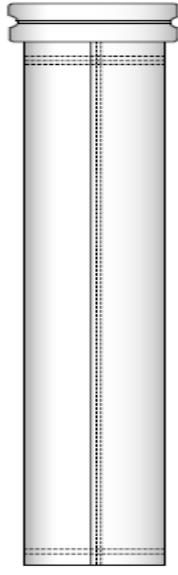
Since each baghouse dust collection system has its own characteristics and system parameters, it is very important to first evaluate each of the following variables in order to properly choose the best fabric suited to the system:

- Temperature entering the Baghouse
- Moisture content
- Particulate size
- Gas composition
- Air to cloth ratio
- Particulate abrasiveness
- Cleaning method

Filter Bags



Flange Top



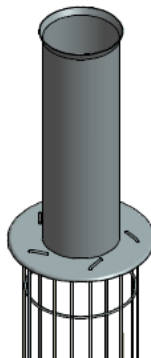
Snap Band Top



Raw Edge Top

RHAJTEK is proud to be a supplier of quality filter bags made from a variety of fabrics that suited all type of applications for dry filtration. We strive to provide only the best quality of fabrics to fit the needs of specific process application. Fabric type to be used varies on application to application and we at RHAJTEK are equipped with technical Know-How to determine which specific type of fabric are suitable on each application.

Filter Cages



The type of cage you use will affect the life of your filter cage. Cages should be designed to optimize filter performance and promote longer bag life. Poorly manufactured cages allow over-flexing of the fabrics, abrasion, holes and eventually lead to filter bag failure.

As a single source supplier of filter bags and cages, RHAJTEK designs all the components of the dust collection system to work together. RHAJTEK cages are made to protect and preserve your filter bags aside from supporting them. We control the fittings and finish of our cages to promote maximum efficiency and durability.

Diaphragm Valves



RHAJTEK offer a wide range of valves from $\frac{3}{4}$ " to 3" size. RHAJTEK valves are characterized by a quick opening which allows in a short period of time a high Jet and a reduced compressed air consumption. RHAJTEK guarantees a quick opening and closures of the diaphragm and a working cycle over a million of pulse.

Bulk Head Connector



The bulk head connector are used to connect in a simple and sure way the blow pipe on top of the tubesheet (tube cell). Its use ensures high energy and materials savings eliminating the needs of welding. It comes in four available sizes: $\frac{3}{4}$ ", 1", 1 $\frac{1}{2}$ " and 2".

At RHAJTEK, we can customized the bulk head connector depending on the configuration of the existing baghouse dust collection unit. These can either be a slip fit type or a threaded design unit.



Corroded/damage blowpipe connector



Modified to our design bulk head connector

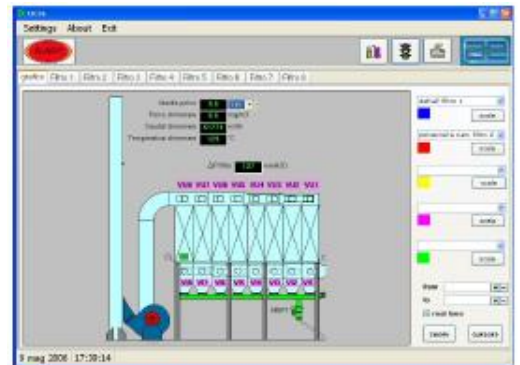
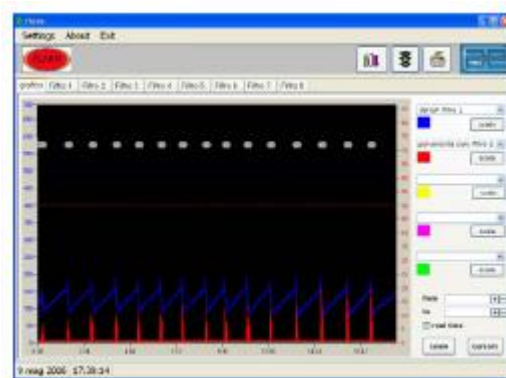
Controllers



RHAJTEK sequential controllers are electronic instruments that comprise of microprocessor card designed to control the solenoid valves for cleaning of filter bags on a pulse jet baghouse dust collection system.

We provide different type of controllers ranging from ordinary timer, Pulse on Demand and a complete lines of controls that monitors the operation of the baghouse.

Environmental Monitoring System



The Environmental Monitoring System is a complete system that monitors the operation of the baghouse from the pulsing sequence, pulsing timing, compressed air monitoring, dust level and opacity from the outlet stack.

This system is integrated with the other components of the baghouse system to properly monitor the baghouse operation.

Differential Pressure Gauges



-Digital Differential Pressure Gauge is an instrument for measuring, displaying and monitoring differential pressure. It is equipped with an analog output 0-20mA/ 4-20mA to transmit signal for a remote process controller.



- Magnehelic Differential Pressure Gauge is similar in function but mainly to provide readings of the differential pressure.



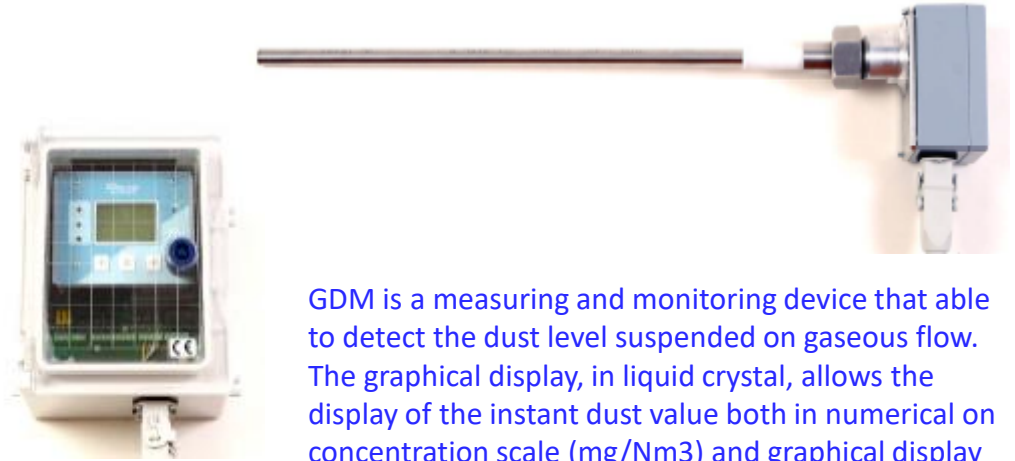
- Photohelic Differential Pressure Gauge provide direct readings of the differential pressure and has a minimum and maximum set points which send signal to the controller if the DP goes above the maximum set point, it will trigger the cleaning sequence of the baghouse. Once the DP goes below the minimum set point, the cleaning will stop.

Compressed Air Flow Meter



The Flow Meter is an instrument for measuring, displaying and controlling air pressure, speed and flow. It is equipped with 4-20mA analog output to transmit signal to a remote process controller. It is also equipped with a temperature sensor for measuring and display of the internal temperature.

Dust Monitoring Device



GDM is a measuring and monitoring device that able to detect the dust level suspended on gaseous flow. The graphical display, in liquid crystal, allows the display of the instant dust value both in numerical on concentration scale (mg/Nm³) and graphical display on its time trend.

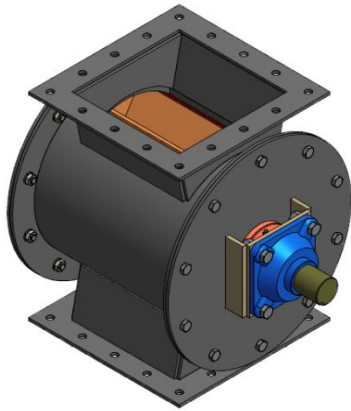
Dust Level Detector

The Dust Level Detector is use to monitor the dust level on the hopper area. This is an essential instrument in determining level of dust in hopper.

This is setup in a fix point on the hopper, silos, tank allowing the monitoring of the product/dust level through an electrical signal of the type NC (normally close) or NO (normally open) signal.

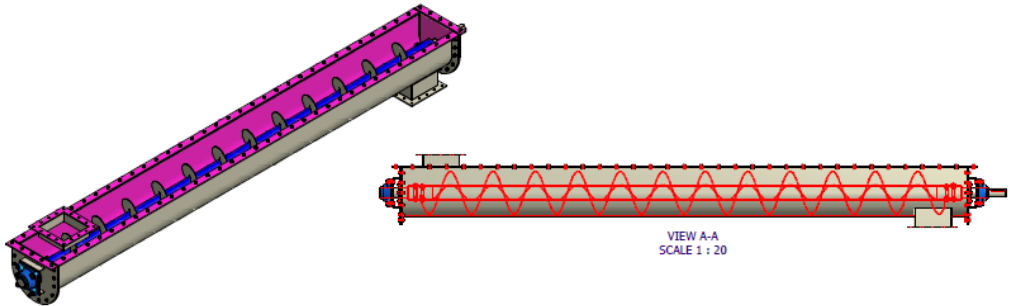


Rotary Valve



This 6-vane heavy duty rotary airlock optimizes dry particulate material flow, while providing a seal to prevent in-leakage of outside air. The assembly features a fabricated housing and oversize shaft for durability. Outboard mounted pre-lubricated bearings are isolated from the particulate by an air gap and lantern ring shaft seals. It is sized to move 9.1 cubic feet per minute [0.258m³/min] at 15 RPM. A TEFC electric motor drive with guards is included. Specialty materials, coating and vane types are also available. RHAJTEK design rotary valve with different capacity depending on customer requirement.

Screw Conveyors



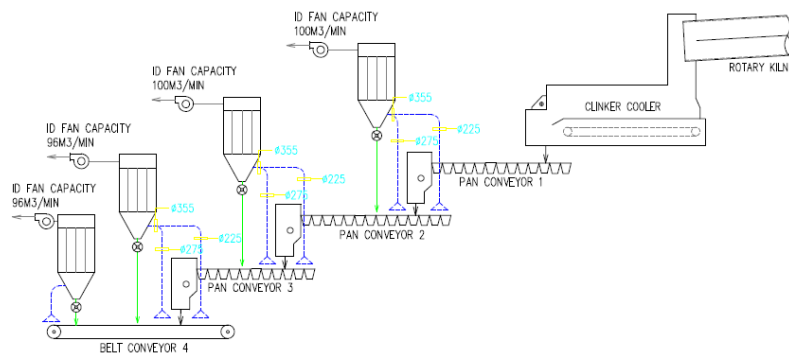
RHAJTEK design screw conveyors with different capacity. The screw conveyor is design with U-trough housing includes an electric motor drive with guard. The flighting will be 6 mm steel; the trough will be 4 mm steel; and the top lids will be 2mm steel. Hard facing can be applied to the flighting depending on the application. Various capacity of the screw conveyors and different lengths are available.

Baghouse Services

Baghouse Technical Audit Evaluation

RHAJTEK Baghouse Technical Audit Evaluation has been designed to assist you in the improvement of your dust collection systems both in the goal of improved environmental compliance and the optimized operation of the baghouse equipment which leads to improved production.

RHAJTEK will review the current design and requirements of the existing baghouse equipment and components to ascertain how well the system is operating and if design modifications are necessary. In addition, this analysis provides the baseline engineering data necessary to determine capacity needs, if any, or system changes for future requirements.



Baghouse Repair and Maintenance



RHAJTEK highly trained service crew provides services for baghouse dust collector repair, maintenance, upgrades and new installation.

Our maintenance program includes preventive maintenance, repair and an annual service contract to maintained all baghouse dust collection unit and aim to minimize cost of our customers in terms of replacement filter bags, cages, etc. And run the equipment efficiently without any problem of dust emission.

RHAJTEK®

GENERAL CONSTRUCTION
DUST COLLECTORS
WET SCRUBBERS
MATERIALS HANDLING
PROCESS EQUIPMENT
ELECTRICALS

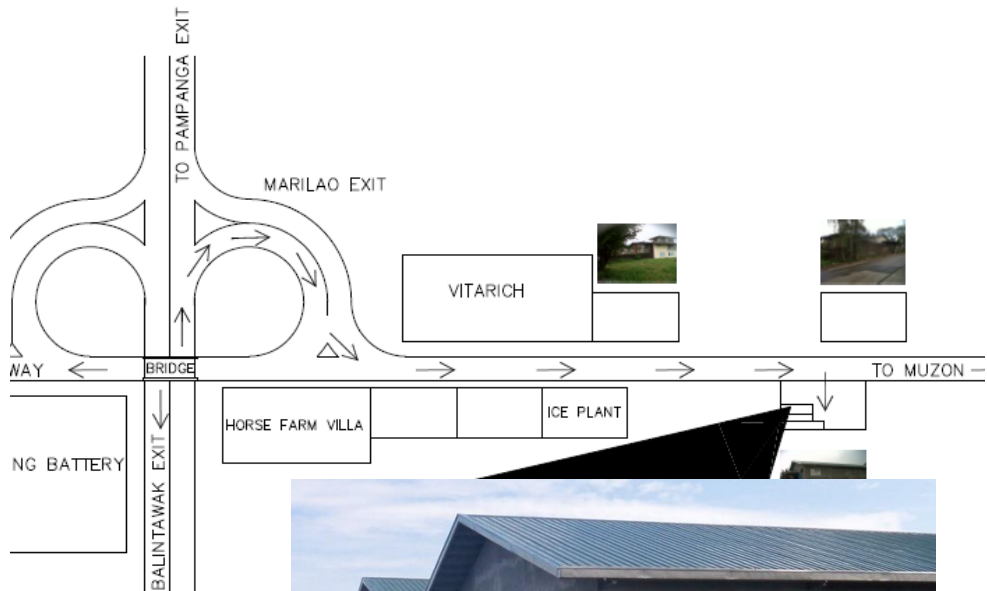
**INDUSTRIAL SYSTEMS
AND CONSTRUCTION
INCORPORATED**

DESIGNERS FABRICATORS SUPPLIERS

DESIGNERS FABRICATORS SUPPLIERS

ELECTRICIANS

Your air pollution control specialist



RHAJTEK Industrial System and Construction Inc.

Address: Il Guillermo Warehouse,
Guillermo Compound, Sta. Rosa I, Marilao,
Bulacan, Philippines

Tel. No.: +632- 710-1746, 044-2483278, 0917-6297895

Email: rhajtekinds@yahoo.com, jensenperalta.rhajtek@gmail.com, sales@rhajtek.com,

Website: www.rhajtek.com

RHAJTEK®